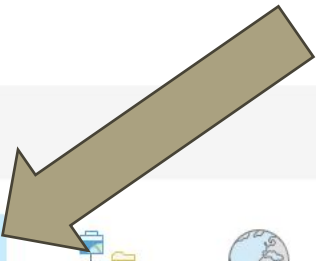


Step by Step GIS mapping Assignment 4

Interpolation of Rainfall Data

Create a Folder Assignment X



New Project



Recent Projects

Find

| | | |
|--|--|--------------------|
| | Mapping uHMT Location C:\Users\Tarendra\OneDrive - CUNY\CREST-uHMT\Map-and-Plots\Mapping uHMT Location\Mapping uHMT Location.aprx | 7/2/2024 3:09 PM |
| | DEM-ESA-NYC C:\Users\Tarendra\Documents\ArcGIS\Projects\DEM-ESA-NYC\DEM-ESA-NYC.aprx | 3/7/2023 2:12 PM |
| | MyProject30 C:\Users\Tarendra\Documents\ArcGIS\Projects\MyProject30\MyProject30.aprx | 4/16/2024 3:40 PM |
| | MyProject29 C:\Users\Tarendra\Documents\ArcGIS\Projects\MyProject29\MyProject29.aprx | 4/9/2024 5:56 PM |
| | MyProject28 C:\Users\Tarendra\Documents\ArcGIS\Projects\MyProject28\MyProject28.aprx | 4/9/2024 3:32 PM |
| | MyProject27 C:\Users\Tarendra\Documents\ArcGIS\Projects\MyProject27\MyProject27.aprx | 3/12/2024 4:29 PM |
| | MyProject26 C:\Users\Tarendra\Documents\ArcGIS\Projects\MyProject26\MyProject26.aprx | 3/12/2024 4:28 PM |
| | MyProject25 C:\Users\Tarendra\Documents\ArcGIS\Projects\MyProject25\MyProject25.aprx | 3/12/2024 1:18 PM |
| | MyProject24 C:\Users\Tarendra\Documents\ArcGIS\Projects\MyProject24\MyProject24.aprx | 3/5/2024 8:47 PM |
| | MyProject23 C:\Users\Tarendra\Documents\ArcGIS\Projects\MyProject23\MyProject23.aprx | 12/12/2023 4:56 PM |
| | Harlem-Schools C:\Users\Tarendra\Documents\ArcGIS\Projects\Harlem-Schools\Harlem-Schools.aprx | 6/27/2023 12:46 PM |
| | Demographics-NYC | |



Recent Templates

[Learn more about creating project templates](#)

Start with another template

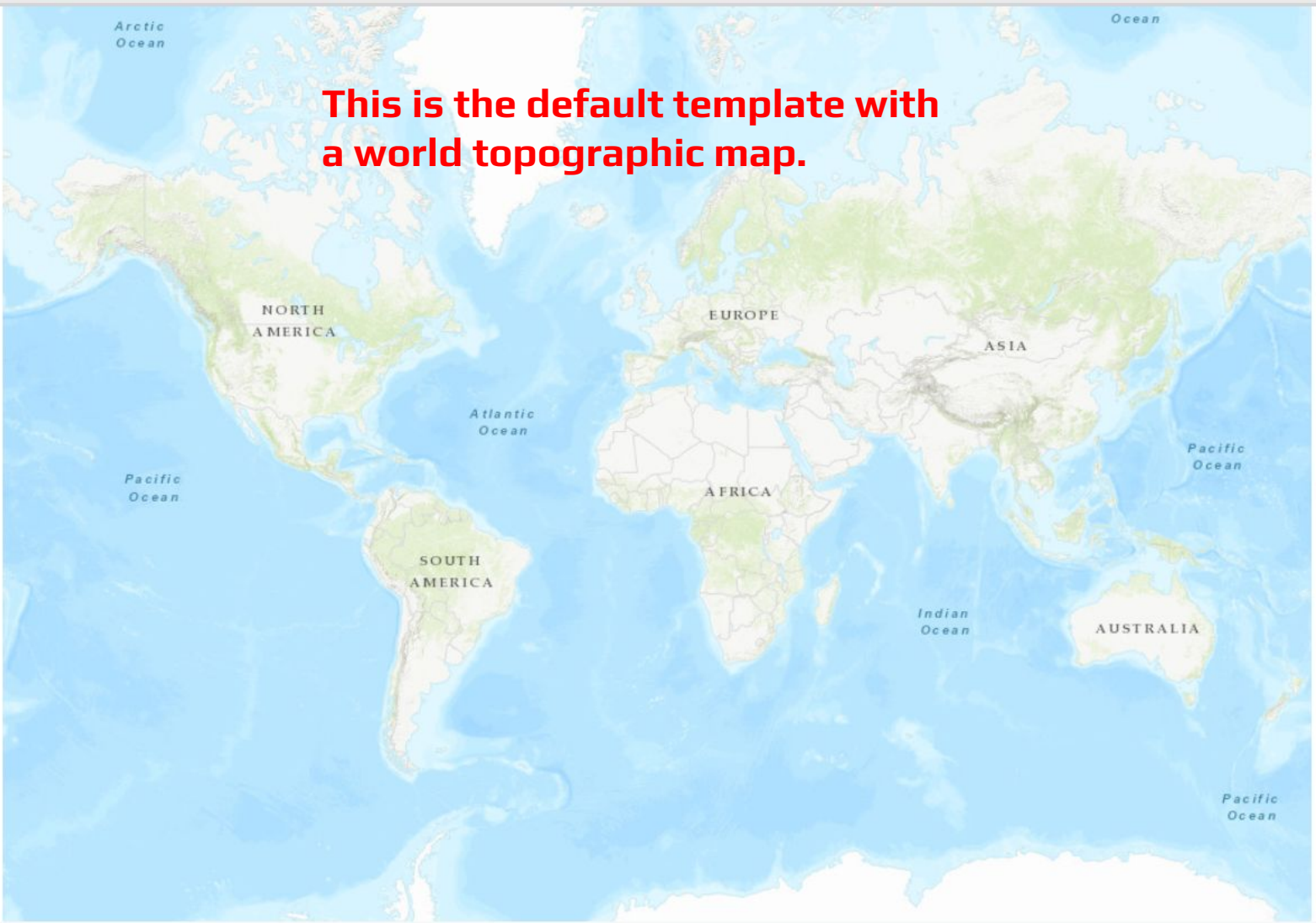
Open another project

Contents

Search

Drawing Order

- Map
- Topographic



Forth assignment is Interpolating Rainfall for NYC

Shared with me > CUNY HIRES > GIS-ArcGIS

Type People Modified

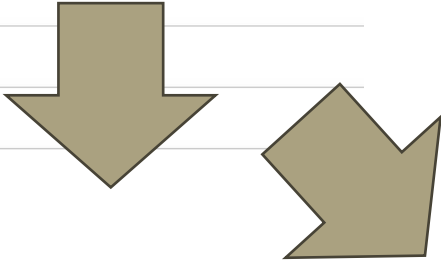
Name ↑

Assignments Data- Downloads

Assignments pdf Map - Uploads

Lessons - Presentations

GIS - Syllabus



Shared ... > Assignments ... > Assignment 4 - In...

Type People Modified

Name ↑

Owner

Last mo... ▼

File size

NYC-Shapefile

me

8:10 PM

—

LabActivity-Rainfall Data Interpolation.docx

me

8:10 PM

15 KB

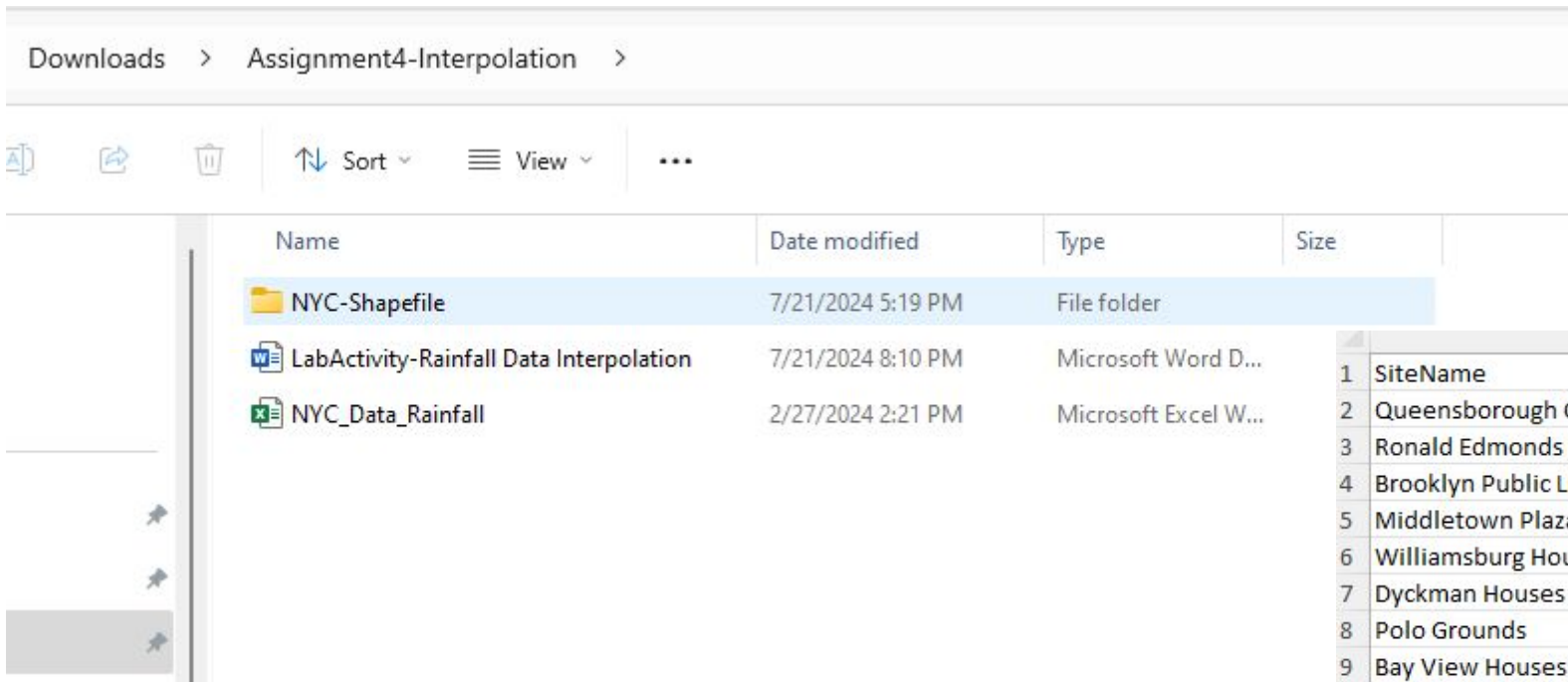
NYC_Data_Rainfall.xlsx

me

Feb 27, 2024

13 KB

Download the data file from Google Folder.



| | A | B | C | D |
|----|---|-------------|------------|----------|
| 1 | SiteName | Longitude | Latitude | Rainfall |
| 2 | Queensborough Community College | -73.7562043 | 40.7568572 | 3.5 |
| 3 | Ronald Edmonds Learning Center MS113 | -73.971405 | 40.6883291 | 3.8 |
| 4 | Brooklyn Public Library - Brownsville Branch | -73.9084794 | 40.6716061 | 3.7 |
| 5 | Middletown Plaza | -73.8295407 | 40.8448633 | 3.2 |
| 6 | Williamsburg Houses | -73.9425489 | 40.7090573 | 3.1 |
| 7 | Dyckman Houses | -73.9210377 | 40.862012 | 3.5 |
| 8 | Polo Grounds | -73.9361225 | 40.8308662 | 3.4 |
| 9 | Bay View Houses | -73.8873663 | 40.6344192 | 3.7 |
| 10 | East River Houses | -73.9384127 | 40.7877898 | 3.2 |
| 11 | Baisley Park | -73.7829681 | 40.6853102 | 3.9 |
| 12 | Far Rockway | -73.7736058 | 40.5975233 | 4.5 |
| 13 | Astoria Houses | -73.9328956 | 40.7730609 | 4 |
| 14 | Haber Houses (Coney Island) | -73.9911467 | 40.5721526 | 4.7 |
| 15 | Walt Whitman Middle School (MS-246) | -73.953056 | 40.6486826 | 4.1 |
| 16 | JHS 04 Shell Bank School | -73.9379309 | 40.5929243 | 4.2 |
| 17 | Brooklyn Academy of Science and The Environment | -73.9617622 | 40.6697325 | 3.9 |
| 18 | PS 151 Mary D. Carter School | -73.9081959 | 40.7576102 | 2.9 |
| 19 | Montauk Intermediate School | -73.9816964 | 40.6349633 | 3.5 |
| 20 | Queens Botanical Garden | -73.8287365 | 40.750627 | 3.2 |
| 21 | New York Harbor School | -74.020077 | 40.691345 | 4.1 |
| 22 | Susan E. Wagner High School | -74.124646 | 40.597878 | 4.5 |
| 23 | South Richmond High School | -74.22259 | 40.512063 | 3.8 |
| 24 | | | | |
| 25 | | | | |

You have provided the Data in table format in an Excel file. Weather Station Locations, Longitude, Latitude and Rainfall amount in each station.

The objective is to create a spatial map using this data.

You also provided a *shapefile* of a New York City Map that has a polygon representing each country.

The shapefile is a file that opens in ArcGIS software.

So, we will use the New York City Map shapefile and Excel data to create a map of interpolations of rainfall data associated with locations using Latitude (Y-axis) and Longitude (X-axis).

Contents

Search

Drawing Order

- Map
 - Topographic

Map

Add Data

Users Tarendra Downloads Assignment4-Interpolation NYC-Shapefile Search NYC-Shapefile

Organize New Item

| Name | Type | Geometry |
|---------------------|-----------|----------|
| ZIP_CODE_040114.shp | Shapefile | Polygon |

Name ZIP_CODE_040114.shp Default

OK Cancel

Symbology

Select a layer in the Contents pane.

Project **Map** Insert Analysis View Edit Imagery Share Arc Hydro GRAIP Lite Help

Feature Layer Labeling Data

Clipboard Navigate Layer Selection Inquiry Labeling Offline

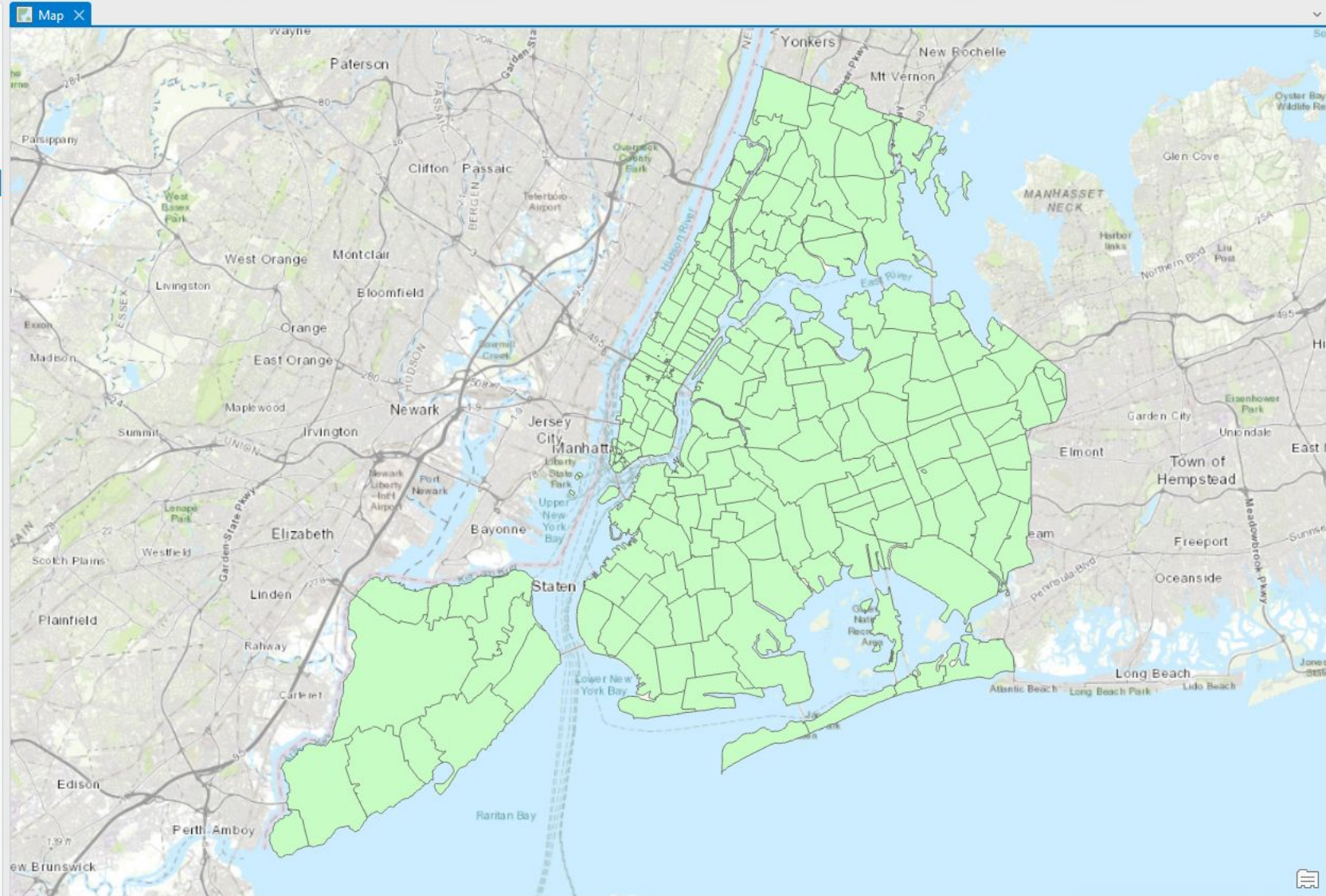
Explore Bookmarks Go To XY Basemap Add Data Add Graphics Layer Select Select By Attributes Select By Location Clear Zoom To Measure Locate Infographics Coordinate Conversion Pause Lock View Unplaced Convert Download Map Sync Remove

Contents

Search

Drawing Order


- Map
 - ZIP_CODE_040114
 - Topographic



Symbology - ZIP_CODE_040114

Primary symbology

Single Symbol

Symbol 

Label

Description

Contents

Search

Drawing Order

- Map
 - ZIP_CODE_040114
 - Topographic

Add Data

Portal

- My Content
- My Favorites
- My Groups
- My Organization
- ArcGIS Online
- Living Atlas

Computer

- Home
- This PC
- Tarendra Lakhankar
- Libraries
- Network
- Creative Cloud Files
- Dropbox (Personal)
- City College Dropbox
- Home Renovation
- OJP8020_8030_2243A
- QGIS 3.36.2
- Favorites

| Name | Type | Geometry |
|------------------------|--------|----------|
| NVC-Shapefile | Folder | |
| NVC_Data_Rainfall.xlsx | Excel | |


Name: Default

Open Cancel

Symbology - ZIP_CODE_040114

Primary symbology

Single Symbol

Symbol: 

Label:

Description:

Contents

Search

Drawing Order

- Map
 - ZIP_CODE_040114
 - Topographic

Add Data

Search NYC_Data_Rainfall.xlsx

| Name | Type | Geometry |
|------------|-------------|----------|
| Rainfall\$ | Excel Table | |

Name: Rainfall\$ Default

OK Cancel

Symbology

Select a layer in the Contents pane.

Project Map Insert Analysis View Edit Imagery Share Arc Hydro GRAIP Lite Help Standalone Table

Clipboard: Cut, Copy, Copy Path, Paste

Navigate: Explore, Bookmarks, Go To XY

Layer: Basemap, Add Data

Selection: Select, Select By Attributes, Select By Location, Clear, Zoom To

Inquiry: Measure, Locate, Infographics, Coordinate Conversion

Labeling: Pause, Lock, View Unplaced, More

Offline: Convert, Download Map, Sync, Remove

Contents

Map

ZIP_CODE_040114

Drawing Order

- Map
- ZIP_CODE_040114

Copy Ctrl+C

Paste Properties Ctrl+Shift+V

Remove

Group

Open

Data Engineering Ctrl+Shift+D

Add Error Layers

Data Design >

Create Chart >

New Report

Joins and Relates >

Create Points From Table >

Geocode Table

Display Route Events...

Selection >

Disable Pop-ups

Configure Pop-ups

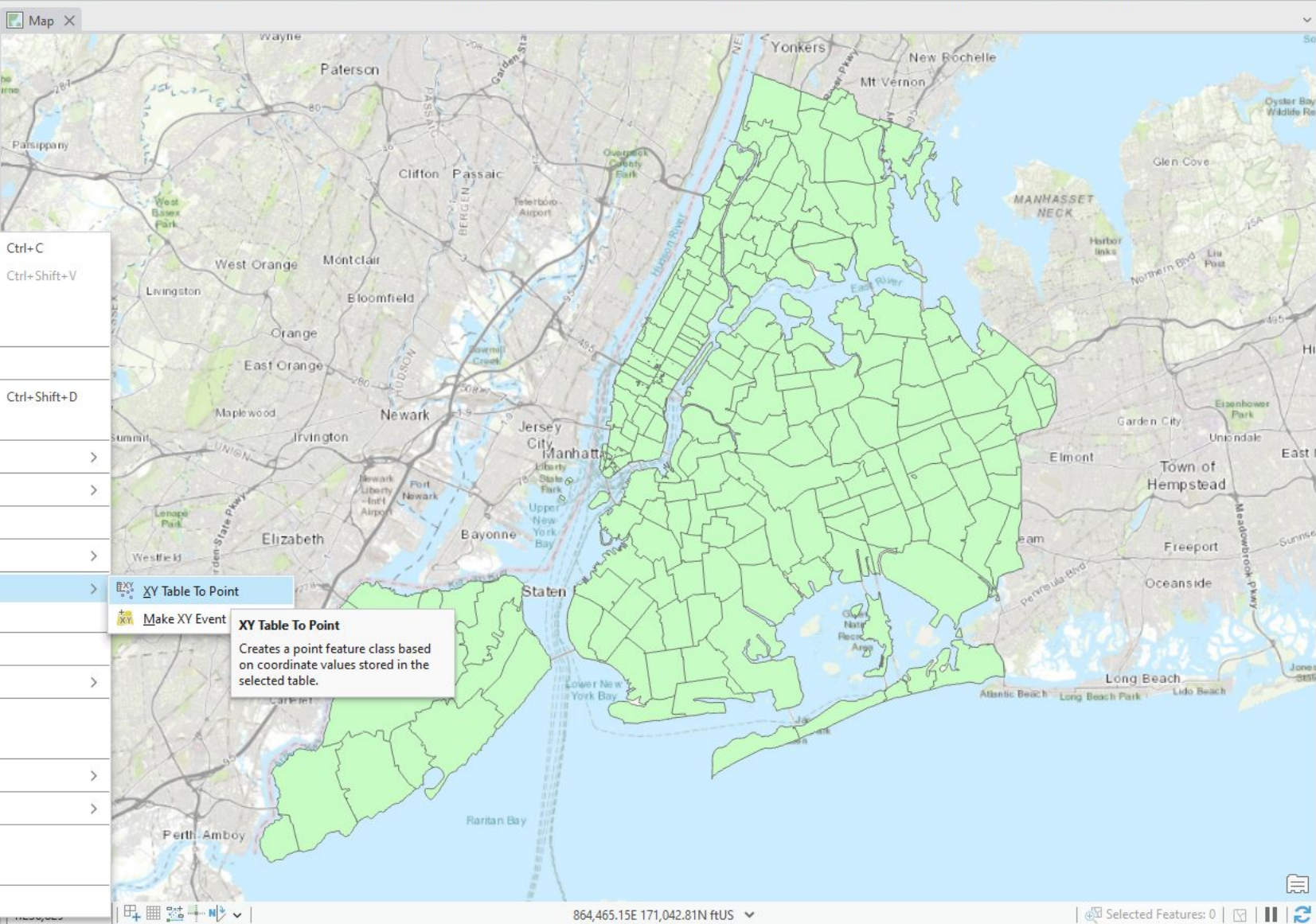
Data >

Sharing >

View Metadata

Edit Metadata

Properties



Symbology

Select a layer in the Contents pane.

XY Table To Point

Make XY Event

XY Table To Point

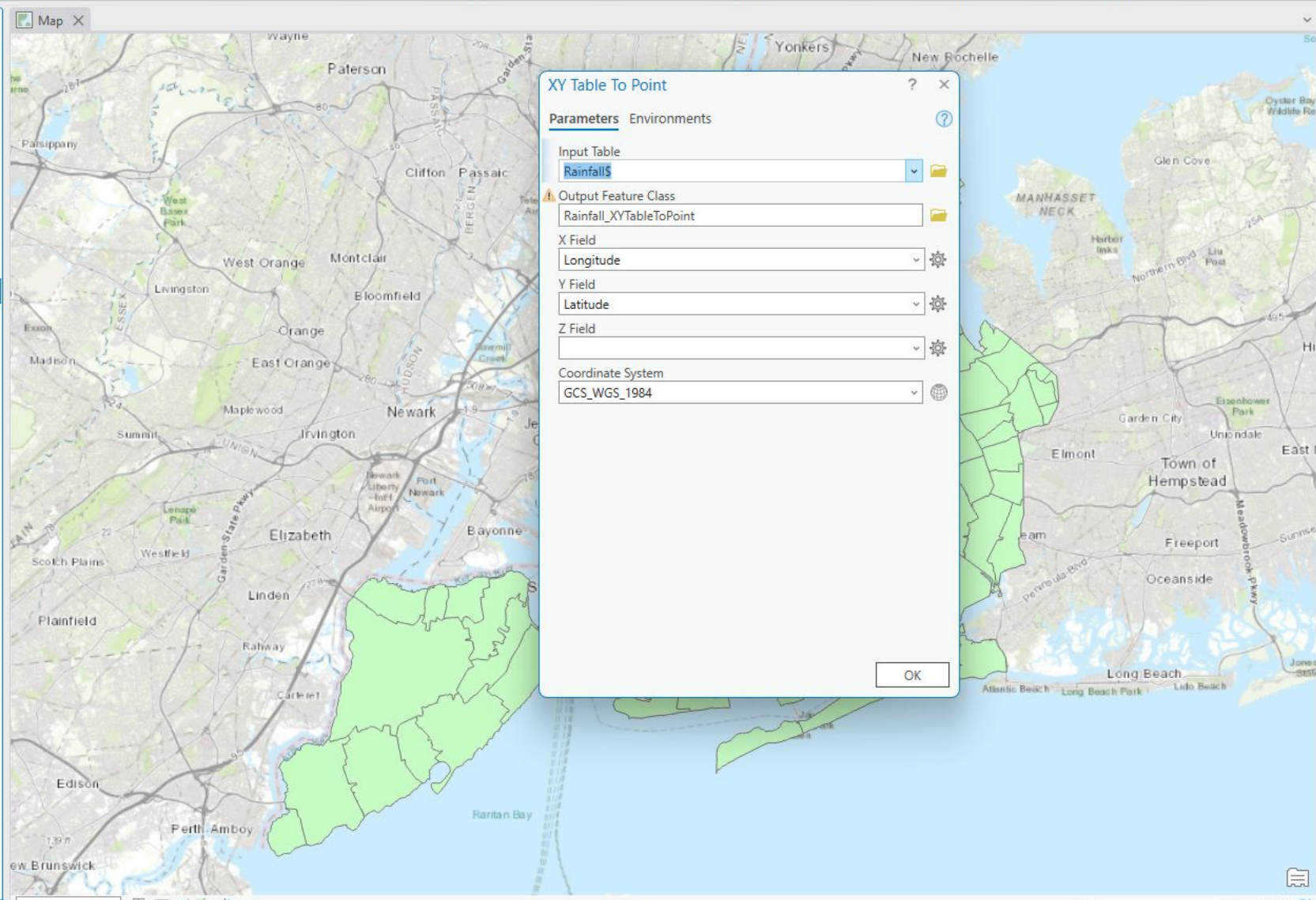
Creates a point feature class based on coordinate values stored in the selected table.

Contents

Search

Drawing Order

- Map
 - ZIP_CODE_040114
 - Topographic
 - Standalone Tables
 - Rainfall\$



XY Table To Point

Parameters Environments

Input Table: Rainfall\$

Output Feature Class: Rainfall_XYTableToPoint

X Field: Longitude

Y Field: Latitude

Z Field:

Coordinate System: GCS_WGS_1984

OK

Symbology

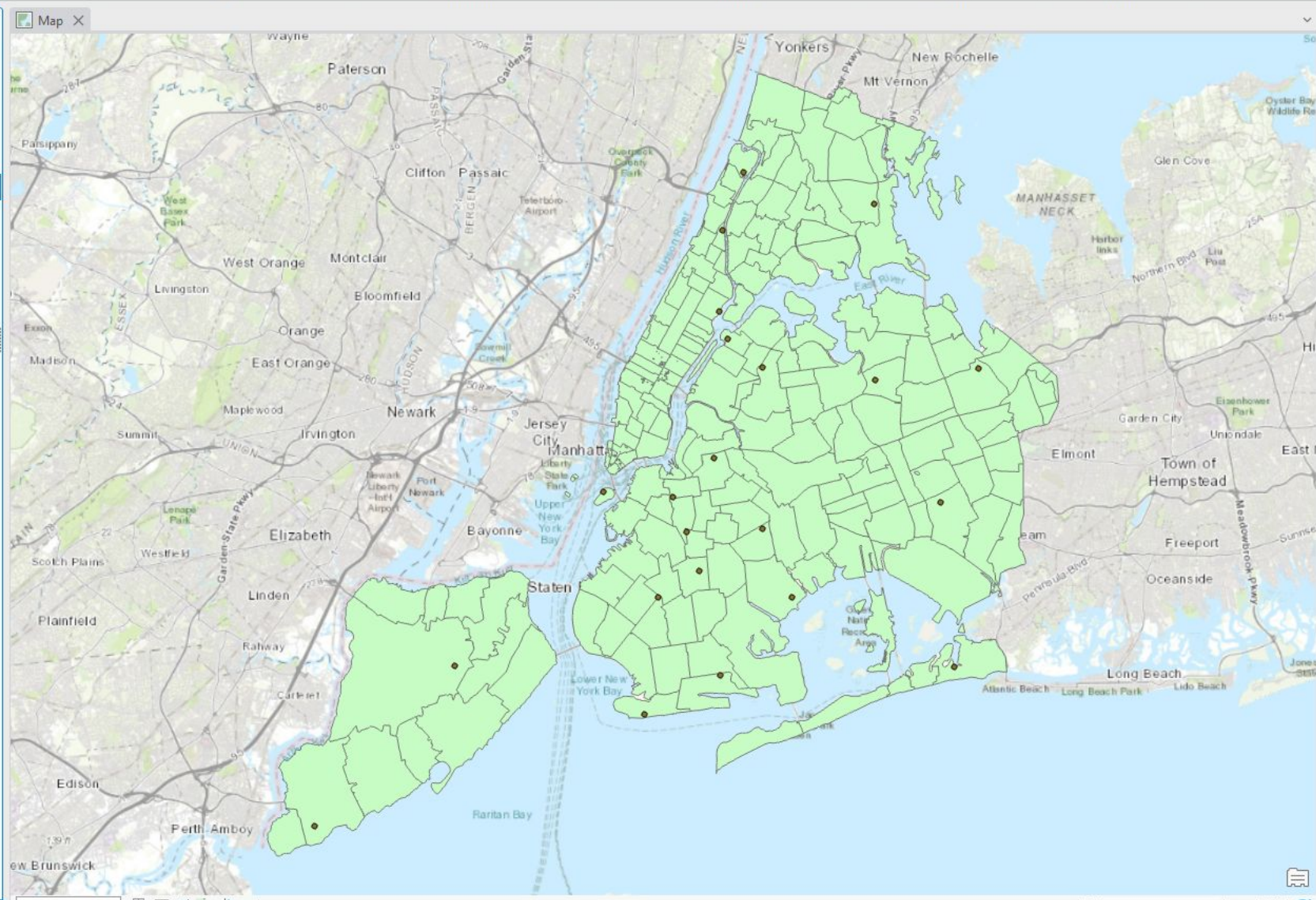
Select a layer in the Contents pane.

Contents

Search

Drawing Order

- Map
 - Rainfall_XYTableToPoint
 - ZIP_CODE_040114
 - Topographic
- Standalone Tables
 - Rainfall\$



Element

Select an element.

Catalog Element Geopr... Modify... Explora... Dockp... Manag...

Project Map Insert Analysis View Edit Imagery Share Arc Hydro GRAIP Lite Help

Feature Layer Labeling Data

Create Import Color Vision Simulator Add Remove Enable Location

Thumbnail Accessibility Animation Device Location

Illumination Visual Camera Postprocessing

Depth Priority Drawing Mode

Mode Distance

Navigator Camera Magnifier

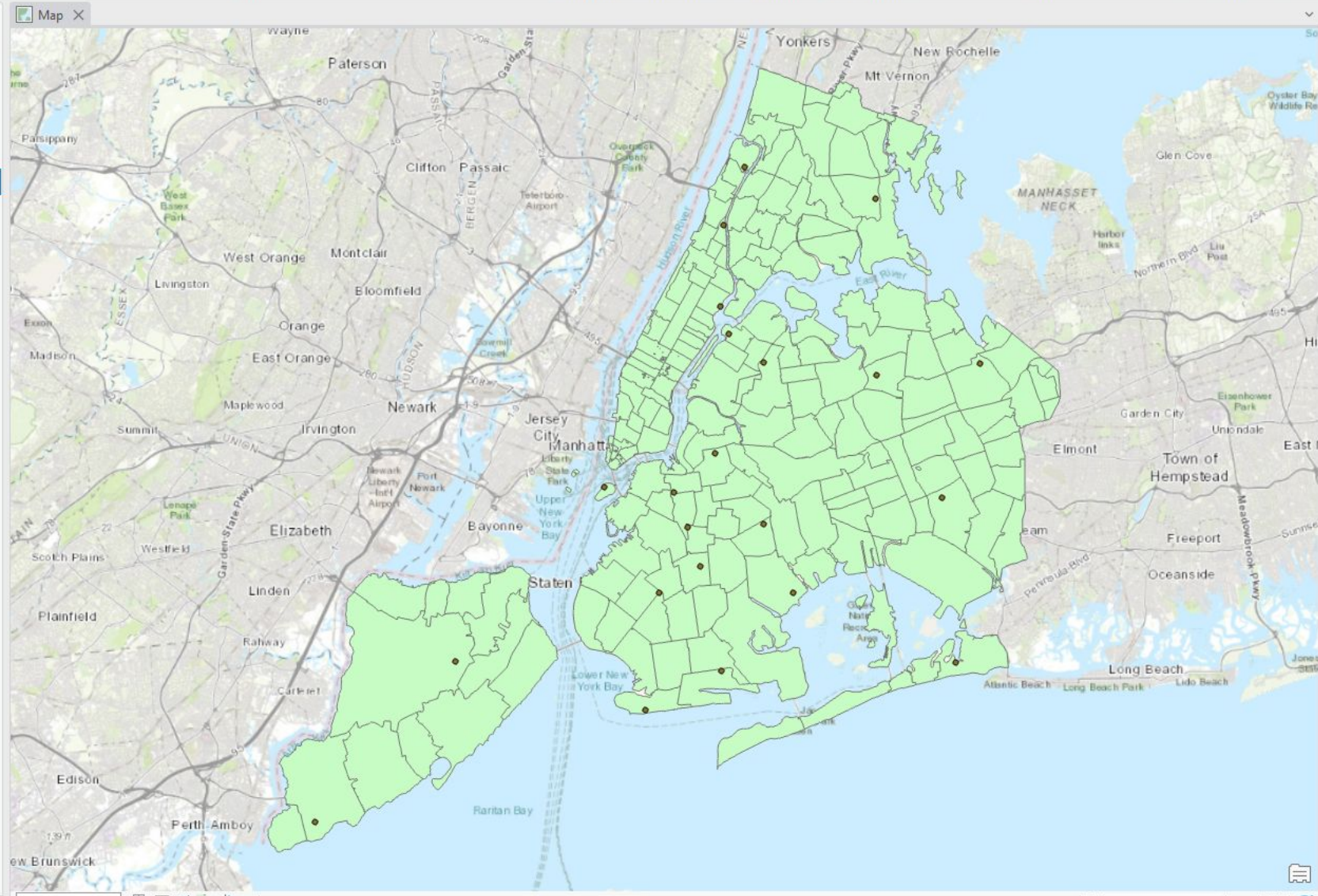
View Clipping Navigation

Contents

Search

Drawing Order

- Map
- ✓ Rainfall_XYTableToPoint
- ✓ ZIP_CODE_040114
- ✓ Topographic
- Standalone Tables
- Rainfall\$



Geoprocessing

Find Tools

Favorites Toolboxes Portal

Project Favorites

- Calculate Field (Data Management Tools)
- Pairwise Buffer (Analysis Tools)
- Near (Analysis Tools)
- Pairwise Dissolve (Analysis Tools)
- Spatial Join (Analysis Tools)
- Pairwise Intersect (Analysis Tools)

Recent

- XY Table To Point (Data Management Tools)

Project Map Insert Analysis View Edit Imagery Share Arc Hydro GRAIP Lite Help Feature Layer Labeling Data

Global Local Map Convert Link Views Link Cursors Reset Panes Catalog Pane Catalog View Contents Geoprocessing Python Window Tasks Workflow Manager Aviation Indoors

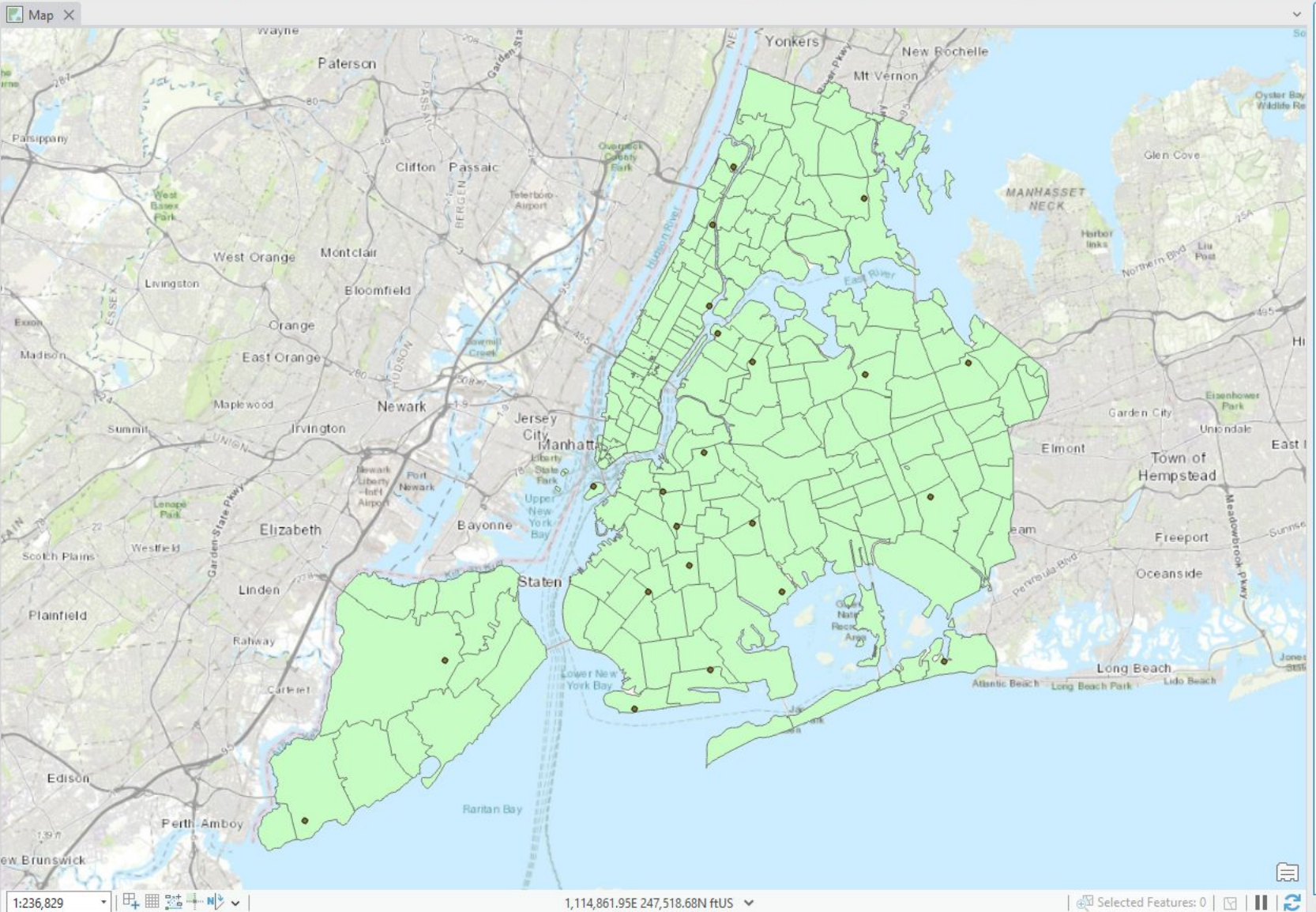
Create Import Color Vision Simulator Add Remove Enable Location Illumination Visual Camera Postprocessing Depth Priority Drawing Mode Mode Distance Navigator Camera Magnifier

Contents

Search

Drawing Order

- Map
- Rainfall_XYTableToPoint
- ZIP_CODE_040114
- Topographic
- Standalone Tables
- Rainfall\$



Geoprocessing

krig

- Kriging (3D Analyst Tools)**
Interpolates a raster surface from points using kriging.
- Kriging (Spatial Analyst Tools)**
Interpolates a raster surface from points using kriging.
- Moving Window Kriging (Geostatistical Analyst Tools)**
Recalculates the Range, Nugget, and Partial Sill semivariogram parameters based on a smaller neighborhood, moving through...
- Empirical Bayesian Kriging (Geostatistical Analyst Tools)**
Empirical Bayesian kriging is an interpolation method that accounts for the error in estimating the underlying semivariogram through...
- Empirical Bayesian Kriging 3D (Geostatistical Analyst Tools)**
Interpolates 3D points using Empirical Bayesian Kriging methodology. All points must have x-, y-, and z-coordinates and a measured value...
- Bitwise Right Shift (Image Analyst Tools)**
Performs a Bitwise Right Shift operation on the binary values of two input rasters.
- Bitwise Right Shift (Spatial Analyst Tools)**
Performs a Bitwise Right Shift operation on the binary values of two input rasters.
- Detect Bright Ocean Objects (Image Analyst Tools)**
Detects potential bright human-made objects—such as ships, oil rigs, and windmills—while masking out the synthetic aperture radar (SA...

18 Items

Catalog Element Geopr... Modify... Explora... Dockp... Manag...

Project Map Insert Analysis View Edit Imagery Share Arc Hydro GRAIP Lite Help Feature Layer Labeling Data

Global Local Map Convert Link Views Link Cursors Reset Panes Catalog Pane Catalog View Contents Geoprocessing Python Window Tasks Workflow Manager Aviation Indoors

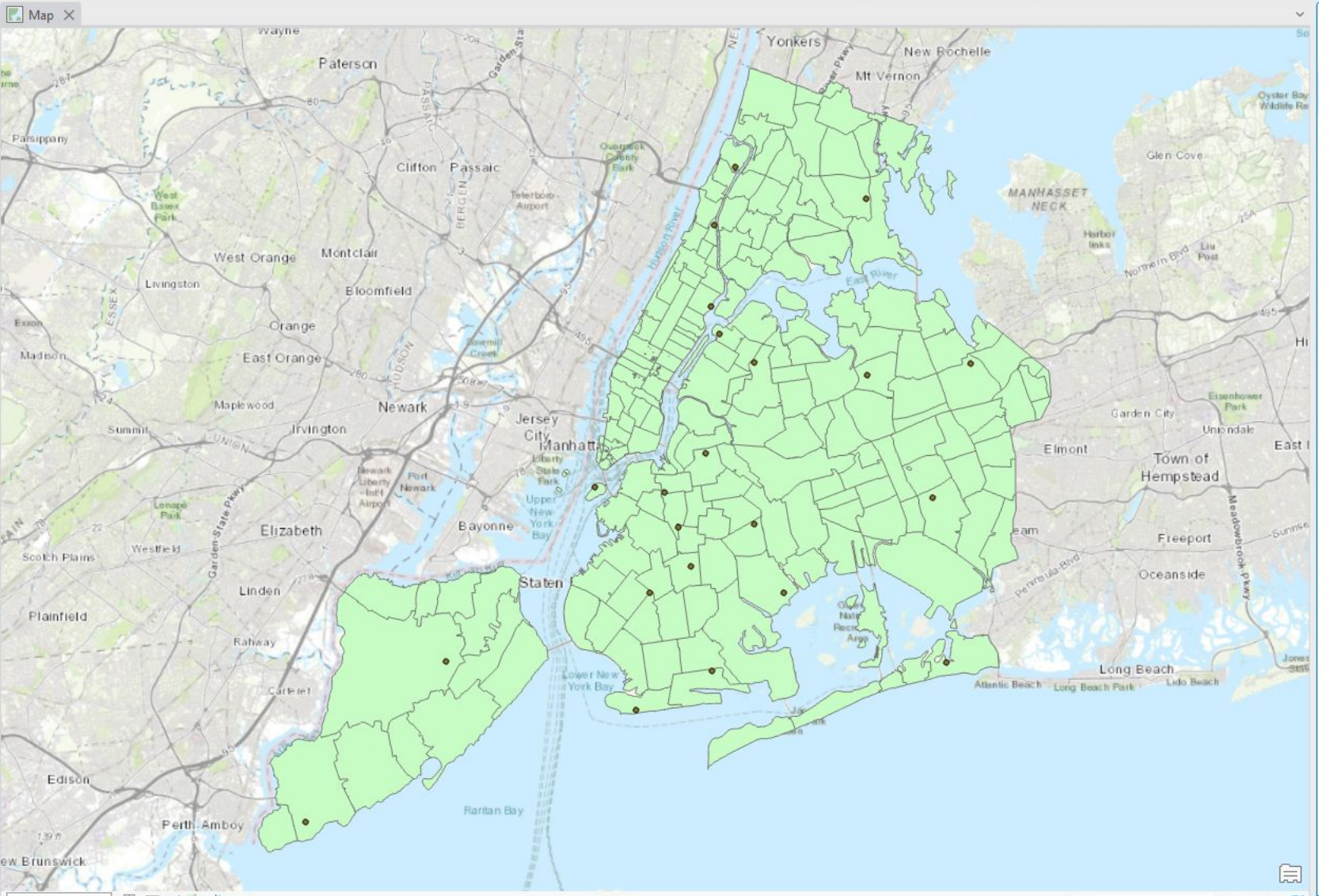
Create Import Color Vision Simulator Add Remove Enable Location Illumination Visual Camera Postprocessing Depth Priority Drawing Mode Mode Distance Navigator Camera Magnifier

Contents

Search

Drawing Order

- Map
 - ✓ Rainfall_XYTableToPoint
 - ✓ ZIP_CODE_040114
 - Topographic
 - Standalone Tables
 - Rainfall\$



Geoprocessing

Kriging

The Empirical Bayesian Kriging tool provides enhanced functionality or performance.

Parameters Environments

Input point features: Rainfall_XYTableToPoint

Z value field: Rainfall

Output surface raster: Kriging_Rain1

Semivariogram properties

- Kriging method: Ordinary
- Semi-variogram model: Gaussian
- Lag size: 0.001400
- Major range:
- Partial sill:
- Nugget:

Output cell size: 1.3997959999999992E-03

Search radius: Variable

- Number of points: 12
- Maximum distance:

Output variance of prediction raster:

Run

Project Map Insert Analysis View Edit Imagery Share Arc Hydro GRAIP Lite Help

Global Local Map Convert Link Views Link Cursors Reset Panes Catalog Pane Catalog View Contents Geoprocessing Python Window Tasks Workflow Manager Aviation Indoors

Create Import Color Vision Simulator Add Remove Enable Location Illumination Visual Camera Postprocessing Depth Priority Drawing Mode Mode Automatic Distance 0.05 m Navigator Camera Magnifier

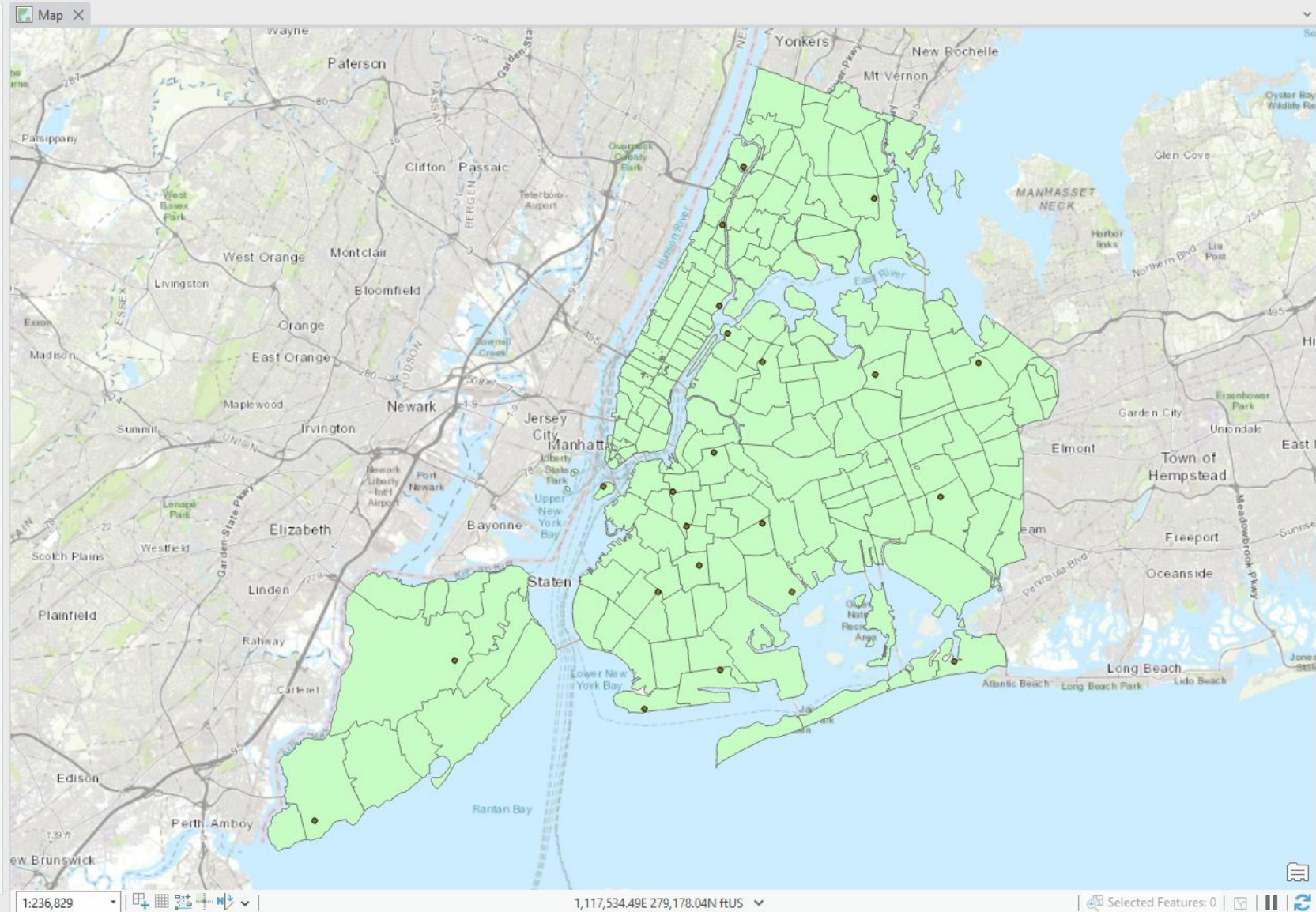
Thumbnail Accessibility Animation Device Location Effects Scene View Clipping Navigation

Contents

Search

Drawing Order

- Map
- ✓ Rainfall_XYTableToPoint
- ✓ ZIP_CODE_040114
- Topographic
- Standalone Tables
- Rainfall\$



Geoprocessing

idw

IDW (3D Analyst Tools)
Interpolates a raster surface from points using an inverse distance weighted (IDW) technique.

IDW (Geostatistical Analyst Tools)
Uses the measured values surrounding the prediction location to predict a value for any unsampled location, based on the assumpti...

IDW (Spatial Analyst Tools)
Interpolates a raster surface from points using an inverse distanc... weighted (IDW) technique. ✓

IDW (Spatial Analyst Tools)
Interpolates a raster surface from points using an inverse distance weighted (IDW) technique.

IDW
Interpolates the values of 3D points using inverse distance weighting (IDW) and creates a voxel layer and source file (.nc) of the predicte...

Identity (Analysis Tools)
Computes a geometric intersection of the input features and identity features. The input features or portions thereof that overlap identit...

Identify Contours (Topographic Production Tools)
Identifies types of contours and applies hypsographic codes to input features.

Identify Flat Areas (arcpyhydro)
Identify flat areas (raster and vector format) based on geomorphon land form classification.

Identify Breach Areas (arcpyhydro)
Identify areas in a DEM that might need to be breached.

20 Items

Catalog Element Geopr... Modify... Explora... Dockp... Manag...

Project Map Insert Analysis View Edit Imagery Share Arc Hydro GRAIP Lite Help

Global Local Map Convert Link Views Link Cursors Reset Panes Catalog Pane Catalog View Contents Geoprocessing Python Window Tasks Workflow Manager Aviation Indoors

Create Import Color Vision Simulator Add Remove Enable Location Illumination Visual Camera Postprocessing Depth Priority Drawing Mode Mode Automatic Distance 0.05 m Navigator Camera Magnifier

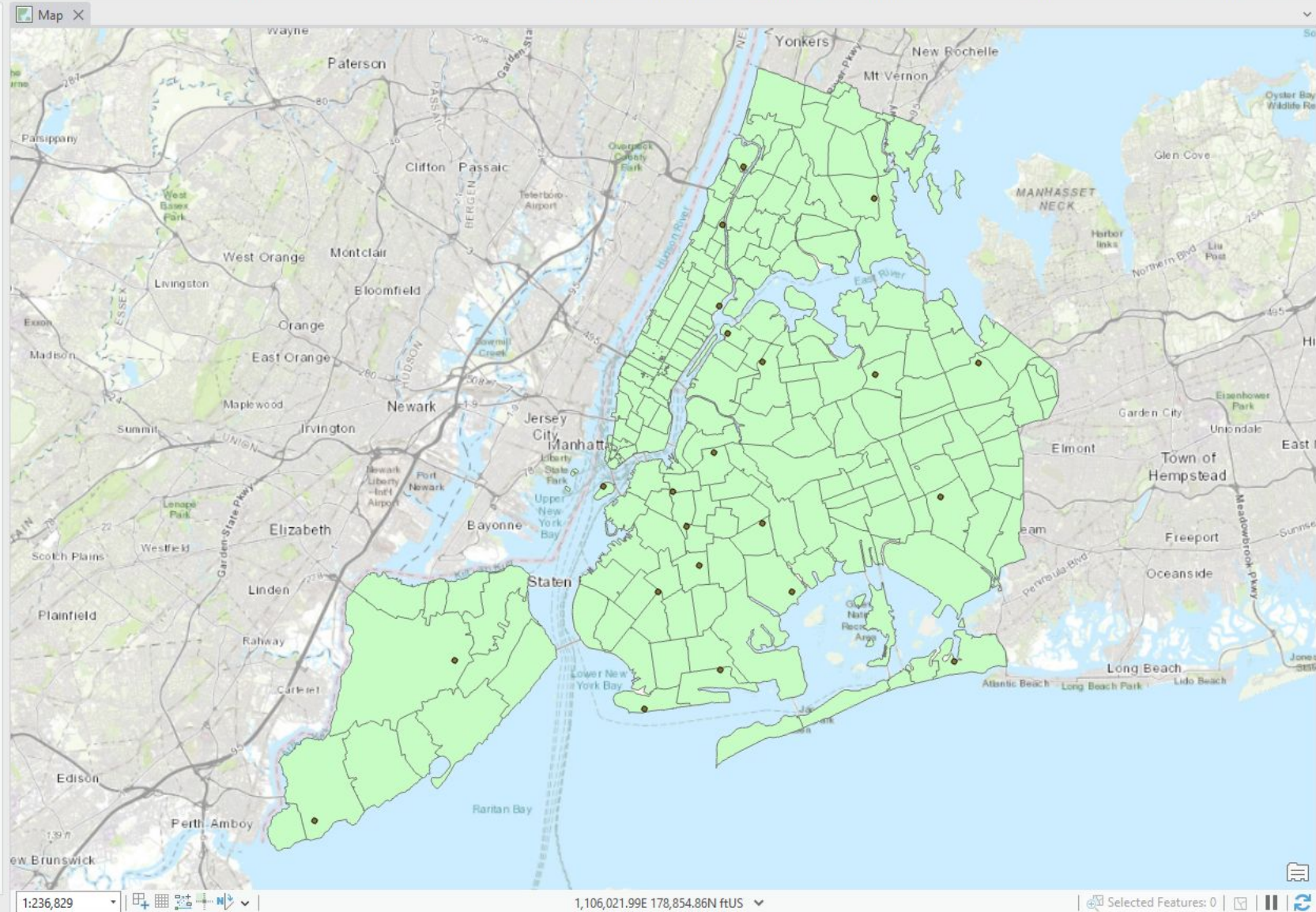
Thumbnail Accessibility Animation Device Location Effects Scene View Clipping Navigation

Contents

Search

Drawing Order

- Map
 - Rainfall_XYTableToPoint
 - ZIP_CODE_040114
 - Topographic
 - Standalone Tables
 - RainfallS



Geoprocessing

IDW

Parameters Environments

Input point features: Rainfall_XYTableToPoint

Z value field: Rainfall

Output raster: Idw_Rainfall2

Output cell size: 1.399795999999992E-03

Power: 2

Search radius: Variable

Number of points: 12

Maximum distance: [Empty]

Input barrier polyline features: [Empty]

Run

Geoprocessing IDW

Parameters Environments

Input point features
Rainfall_XYTableToPoint

Z value field
Rainfall

Output raster
Idw_Rainfall3

Output cell size
1.6779512283527E-03

Power
2

Search radius
Variable

Number of points
21

Maximum distance

Input barrier polyline features

Run

IDW completed with warnings.
View Details Open History

Geoprocessing IDW

Parameters Environments

Output Coordinates
Output Coordinate System
Geographic Transformations

Processing Extent
Extent
Extent of data in all layers
Top
RainfallXYTableToPoint
Left
ZIPCODE_040114
Right
IdwRainfall3
Bottom
120020.85646513
Extent Coordinate System
NAD 1983 StatePlane New York Long Island FIPS 3104 Feet

Raster Analysis
Cell Size
Maximum of Inputs
Cell Size Projection Method
Convert units
Mask
ZIP_CODE_040114

Geodatabase
Output CONFIG Keyword
Auto Commit
1000

Raster Storage

Run

IDW completed with warnings.
View Details Open History

8:57 PM

Project Map Insert Analysis View Edit Imagery Share Arc Hydro GRAIP Lite Help Raster Layer Data

Global Local Map Convert Link Views Link Cursors Reset Panes Catalog Pane Catalog View Contents Geoprocessing Python Window Tasks Workflow Manager Aviation Indoors

Create Import Color Vision Simulator Add Remove Enable Location Illumination Visual Camera Postprocessing Depth Priority Drawing Mode Mode Automatic Distance 0.05 m Navigator Camera Magnifier

Contents

Search

Drawing Order

- Map
 - Rainfall_XYTableToPoint
 - ZIP_CODE_040114
 - Idw_Rainfall3

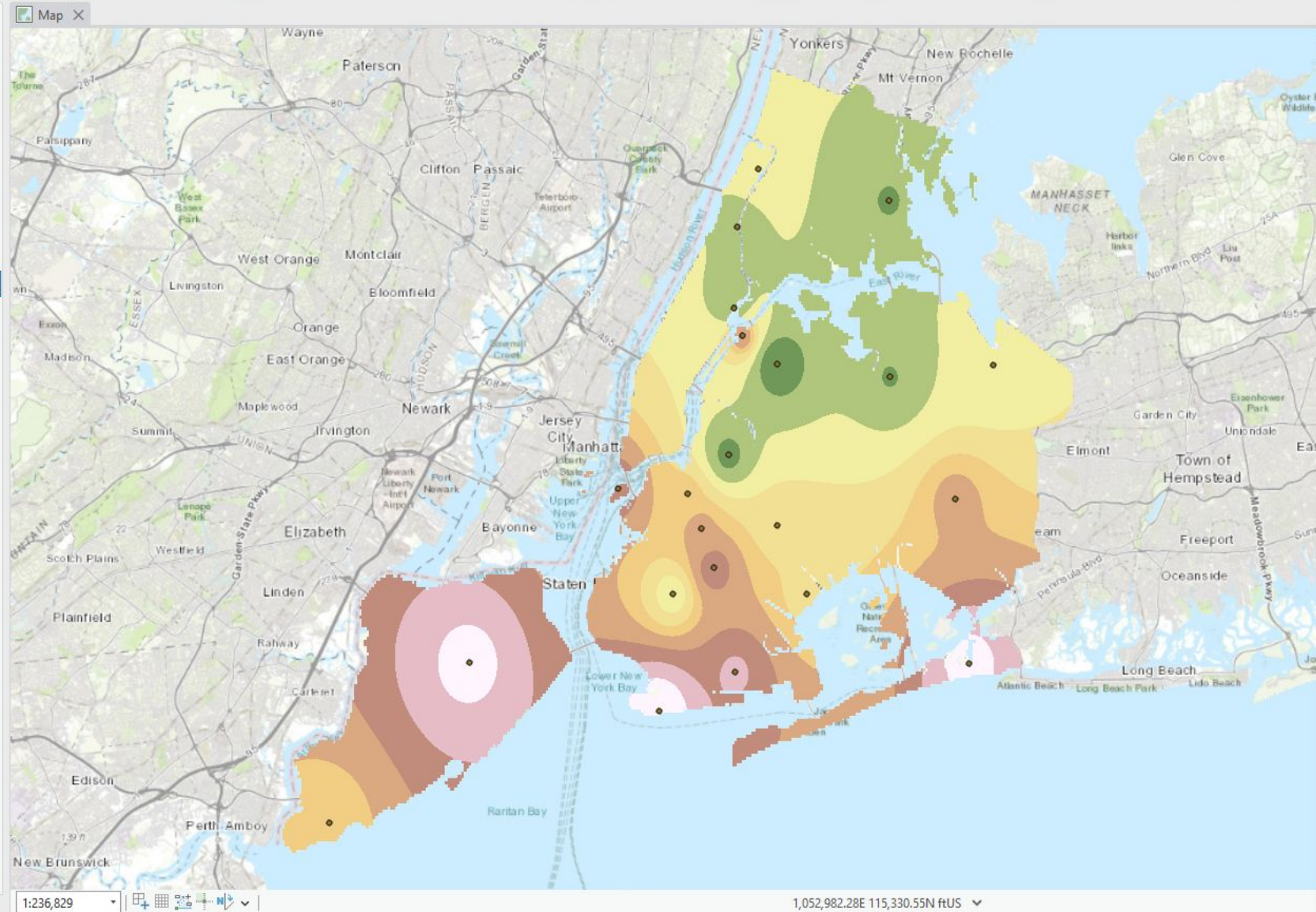
VALUE

- 2.904 - 3.215
- 3.216 - 3.448
- 3.449 - 3.623
- 3.624 - 3.753
- 3.754 - 3.85
- 3.851 - 3.98
- 3.981 - 4.154
- 4.155 - 4.387
- 4.388 - 4.7

Topographic

Standalone Tables

- Rainfalls



Geoprocessing IDW

Parameters Environments

Output Coordinates

Output Coordinate System

Geographic Transformations

Processing Extent

Extent

X and Y Extent

Top 272710.9493783

Left 913129.01887082

Right 1067494.2754284

Bottom 120020.85646513

Extent Coordinate System

NAD 1983 StatePlane New York Long Island FIPS 3104 Feet

Raster Analysis

Cell Size

Maximum of Inputs

Cell Size Projection Method

Convert units

Mask

ZIP_CODE_040114

Snap Raster

Geodatabase

Output CONFIG Keyword

Auto Commit 1000

Raster Storage

Run

IDW completed with warnings. View Details Open History

Contents

Search

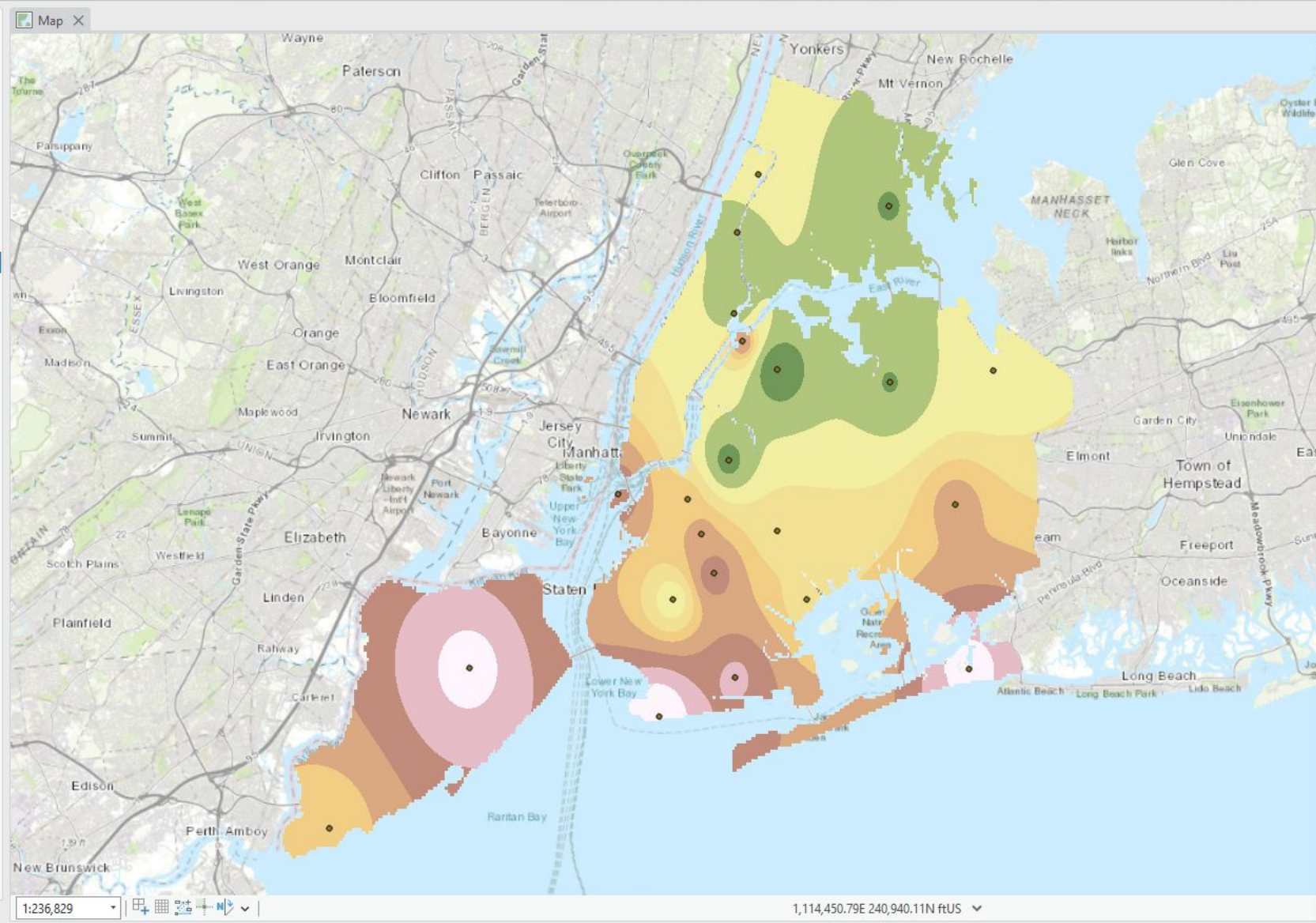
Drawing Order

- Map
- Rainfall_XYTableToPoint
- ZIP_CODE_040114
- Idw_Rainfall3

VALUE

- 2.904 - 3.215
- 3.216 - 3.448
- 3.449 - 3.623
- 3.624 - 3.753
- 3.754 - 3.85
- 3.851 - 3.98
- 3.981 - 4.154
- 4.155 - 4.387
- 4.388 - 4.7

Topographic
 Standalone Tables
 Rainfalls



Symbology - ZIP_CODE_040114

Format Polygon Symbol

Gallery Properties

Type here to search

Symbols found: 157

ArcGIS 2D

- Black Outline (1pt)
 - Style: ArcGIS 2D
 - Category: Common
 - Tags: black
- Dashed Black...
- Airport
- Airport Runway
- Building Footprint
- Cemetery
- Commer...
- Cultural
- Education
- Governme...
- Health/ Medical
- Industrial
- Land
- Landmark/ POI
- Park
- Recreation
- Water (area)
- Airport
- Airport Runway
- Building Footprint
- Cemetery
- Commer...
- Cultural
- Education
- Governme...
- Health/ Medical
- Industrial
- Land
- Landmark/ POI
- Park
- Recreation
- Water (area)
- Airport
- Airport Runway
- Building
- Cemetery
- Commer...
- Cultural
- Education

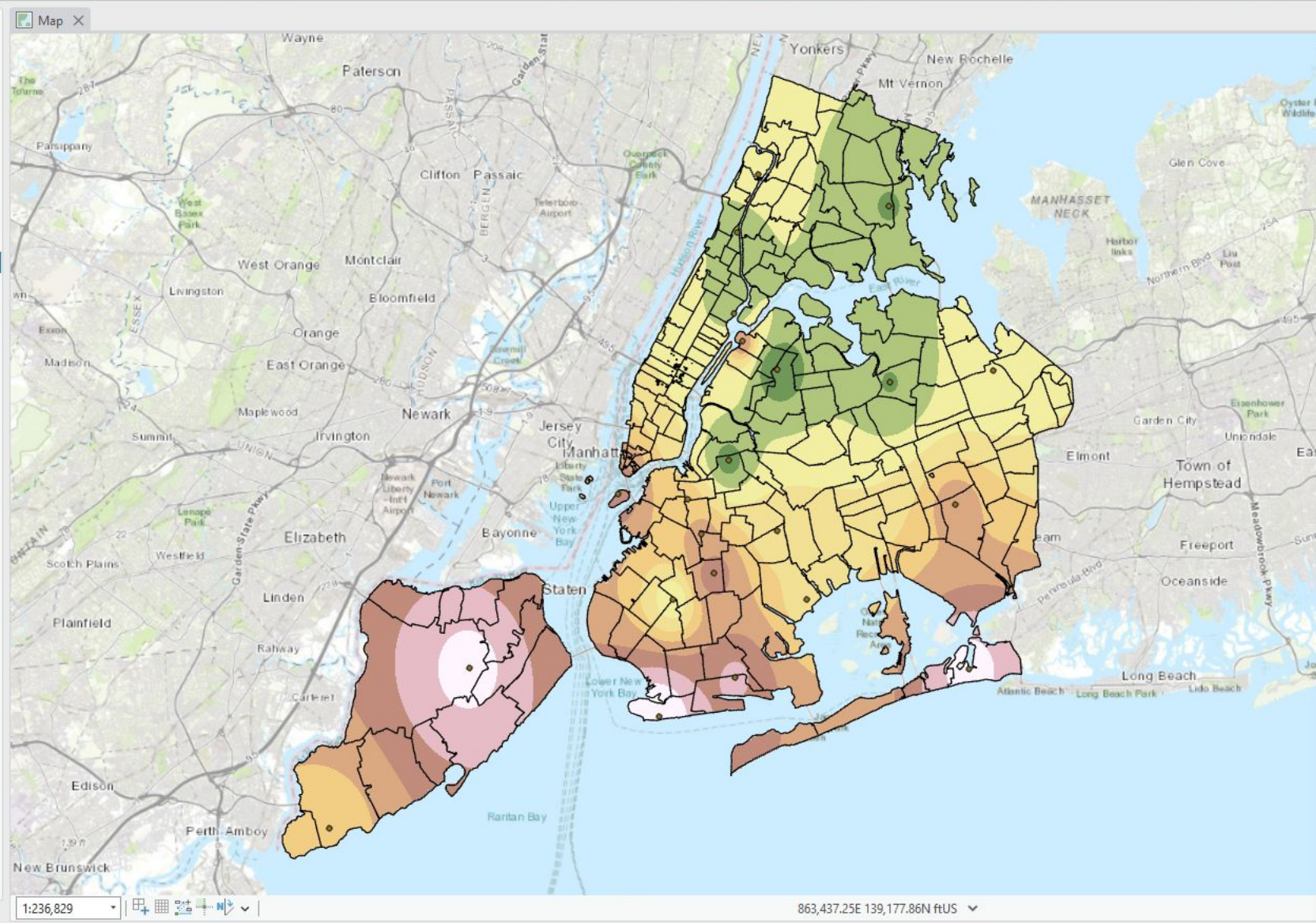
Contents

Search

Drawing Order

- Map
- Rainfall_XYTableToPoint
- ZIP_CODE_040114
- Idw_Rainfall3
 - VALUE
 - 2.904 - 3.215
 - 3.216 - 3.448
 - 3.449 - 3.623
 - 3.624 - 3.753
 - 3.754 - 3.85
 - 3.851 - 3.98
 - 3.981 - 4.154
 - 4.155 - 4.387
 - 4.388 - 4.7
- Topographic
- Standalone Tables
- Rainfalls

Contents Tasks



Symbology - ZIP_CODE_040114

Format Polygon Symbol

Gallery Properties

Type here to search

Symbols found: 157

ArcGIS 2D

| | | | | |
|--------------------|------------------|-----------------|----------|----------------|
| Black Outline... | Black Outline... | Dashed Black... | Airport | Airport Runway |
| Building Footprint | Cemetery | Commerc... | Cultural | Education |
| Governme... | Health/ Medical | Industrial | Land | Landmark/ POI |
| Park | Recreation | Water (area) | Airport | Airport Runway |
| Building Footprint | Cemetery | Commerc... | Cultural | Education |
| Governme... | Health/ Medical | Industrial | Land | Landmark/ POI |
| Park | Recreation | Water (area) | Airport | Airport Runway |
| Building | Cemetery | Commerc... | Cultural | Education |

Symbology Geoprocessing

**Then, add new layout and add the map
you just created.**

You should use landscape page size.

Project Map Insert Analysis View Edit Imagery Share Arc Hydro GRAIP Lite Help Feature Layer Labeling Data

New Map New Layout New Report New Notebook Import Map Import Layout Task

Connections Add Folder New Investigation

Point Map Notes Line Map Notes Polygon Map Notes

Text Map Notes 1:1,000 Text Map Notes 1:25,000 Text Map Notes 1:250,000

New Link Chart Distance and Direction Add New Import Add Item

Link Analysis Measurements Styles Favorites

Contents

ANSI - Portrait

| | | | | | |
|-------------------|------------------|-------------------|------------------|------------------|------------------|
| Letter 8.5" x 11" | Legal 8.5" x 14" | Tabloid 11" x 17" | ANSI C 17" x 22" | ANSI D 22" x 34" | ANSI E 34" x 44" |
|-------------------|------------------|-------------------|------------------|------------------|------------------|

ANSI - Landscape

| | | | | | |
|-------------------|------------------|-------------------|------------------|------------------|------------------|
| Letter 8.5" x 11" | Legal 8.5" x 14" | Tabloid 11" x 17" | ANSI C 17" x 22" | ANSI D 22" x 34" | ANSI E 34" x 44" |
|-------------------|------------------|-------------------|------------------|------------------|------------------|

Architectural - Portrait

| | | | | |
|--------------------------|---------------------------|---------------------------|---------------------------|---------------------------|
| Architectural A 9" x 12" | Architectural B 12" x 18" | Architectural C 18" x 24" | Architectural D 24" x 36" | Architectural E 36" x 48" |
|--------------------------|---------------------------|---------------------------|---------------------------|---------------------------|

Architectural - Landscape

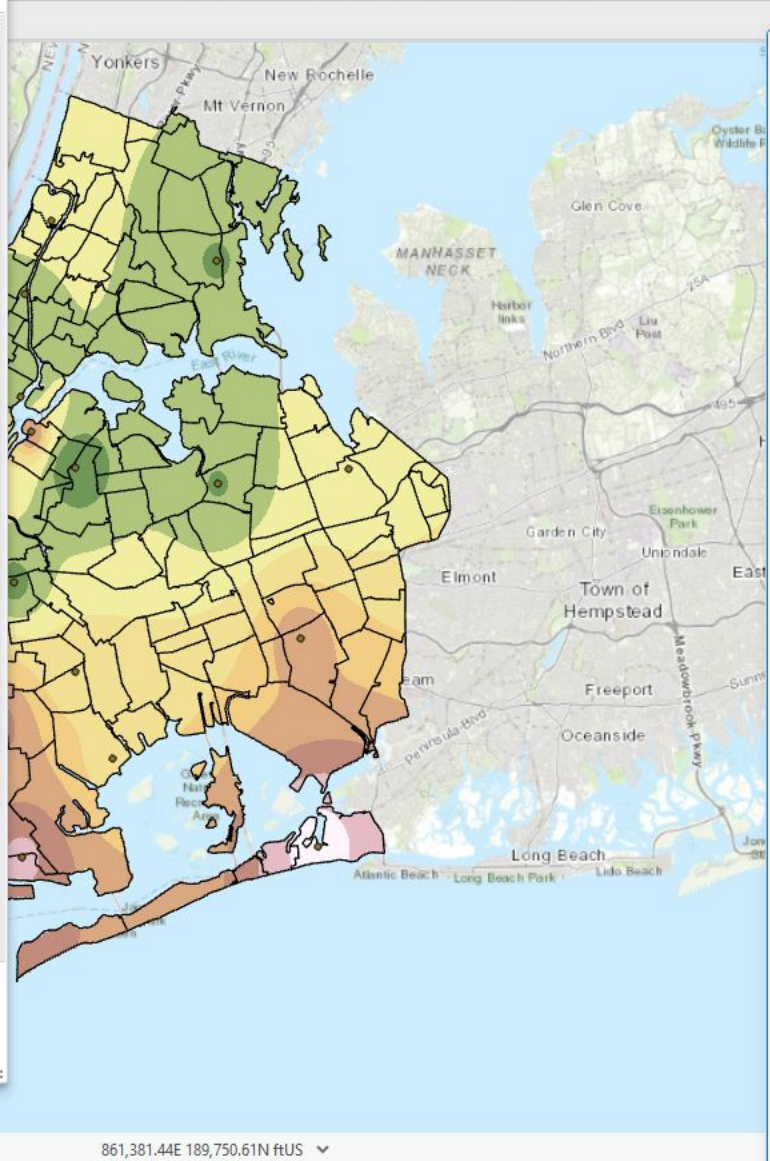
| | | | | |
|--------------------------|---------------------------|---------------------------|---------------------------|---------------------------|
| Architectural A 9" x 12" | Architectural B 12" x 18" | Architectural C 18" x 24" | Architectural D 24" x 36" | Architectural E 36" x 48" |
|--------------------------|---------------------------|---------------------------|---------------------------|---------------------------|

ISO - Portrait

| | | | | | |
|--------------------|--------------------|--------------------|--------------------|--------------------|---------------------|
| A5 148 mm x 210 mm | A4 210 mm x 297 mm | A3 297 mm x 420 mm | A2 420 mm x 594 mm | A1 594 mm x 841 mm | A0 841 mm x 1189 mm |
|--------------------|--------------------|--------------------|--------------------|--------------------|---------------------|

ISO - Landscape

- Import layout file...
- Custom page size...
- Select page from printer...



Symbology - ZIP_CODE_040114

Format Polygon Symbol

Gallery Properties

Type here to search

Symbols found: 157

ArcGIS 2D

| | | | | |
|--------------------|------------------|-----------------|----------|----------------|
| Black Outline... | Black Outline... | Dashed Black... | Airport | Airport Runway |
| Building Footprint | Cemetery | Commerc... | Cultural | Education |
| Governme... | Health/ Medical | Industrial | Land | Landmark/ POI |
| Park | Recreation | Water (area) | Airport | Airport Runway |
| Building Footprint | Cemetery | Commerc... | Cultural | Education |
| Governme... | Health/ Medical | Industrial | Land | Landmark/ POI |
| Park | Recreation | Water (area) | Airport | Airport Runway |
| Building | Cemetery | Commerc... | Cultural | Education |

Project Map Insert Analysis View Edit Imagery Share Arc Hydro GRAIP Lite Help Feature Layer Labeling Data

New Map New Layout New Report New Notebook Import Map Import Layout Task

Connections Add Folder New Investigation Knowledge Graph

Point Map Notes Line Map Notes Polygon Map Notes Text Map Notes 1:1,000 Text Map Notes 1:25,000 Text Map Notes 1:250,000

New Link Chart Distance and Direction Add New Import Add Item

Link Analysis Measurements Styles Favorites

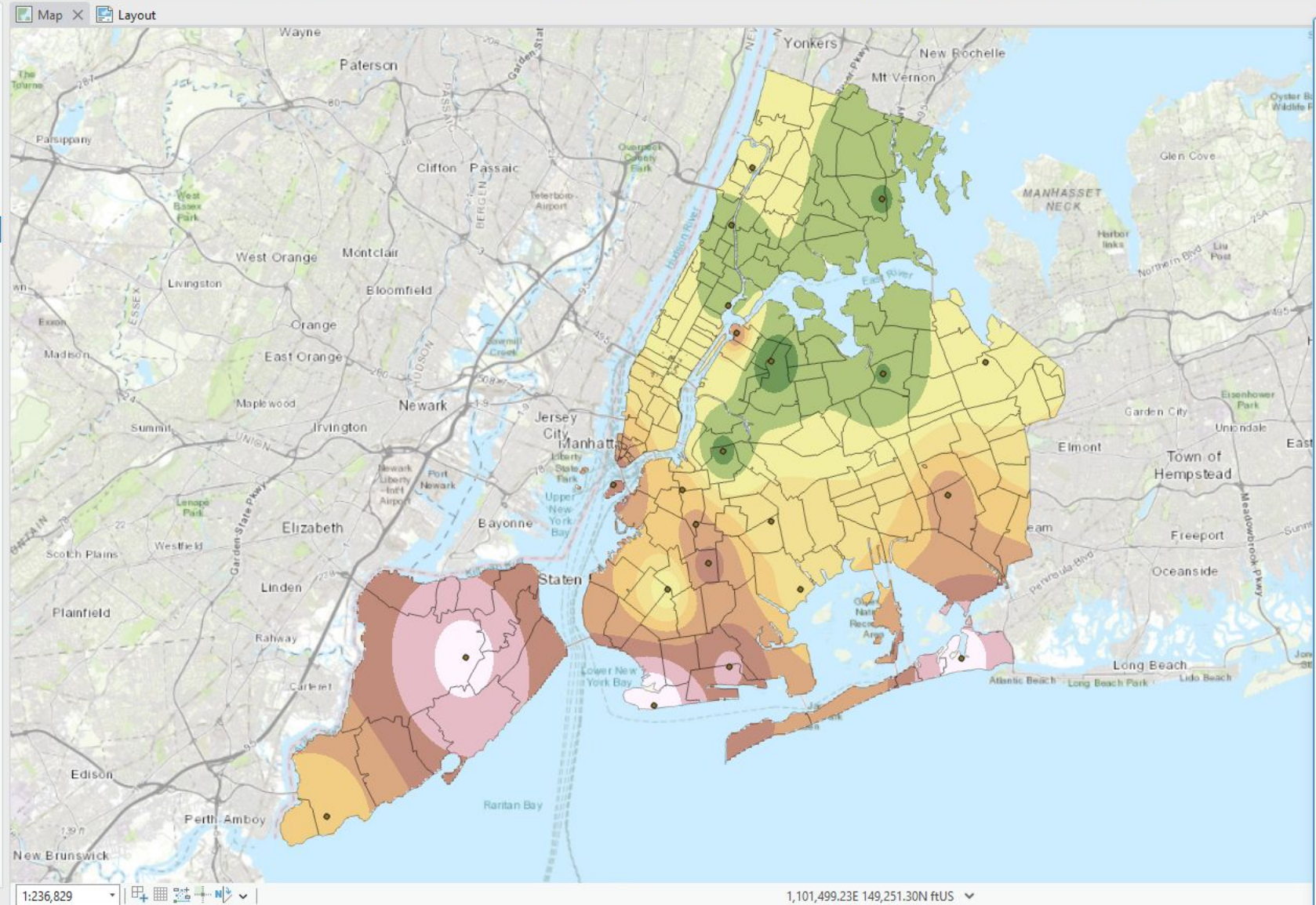
Contents

Search

Drawing Order

- Map
 - Rainfall_XYTableToPoint
 - ZIP_CODE_040114**
 - VALUE
 - 2.904 - 3.215
 - 3.216 - 3.448
 - 3.449 - 3.623
 - 3.624 - 3.753
 - 3.754 - 3.85
 - 3.851 - 3.98
 - 3.981 - 4.154
 - 4.155 - 4.387
 - 4.388 - 4.7
 - Idw_Rainfall3
- Standalone Tables
 - Rainfalls

1:236,829



Symbology - ZIP_CODE_040114

Format Polygon Symbol

Gallery Properties

Appearance

Color

Outline color

Outline width 0.25 pt

Enable scale-based sizing

Angle alignment Map

100%

Auto Apply

Apply Cancel

Contents

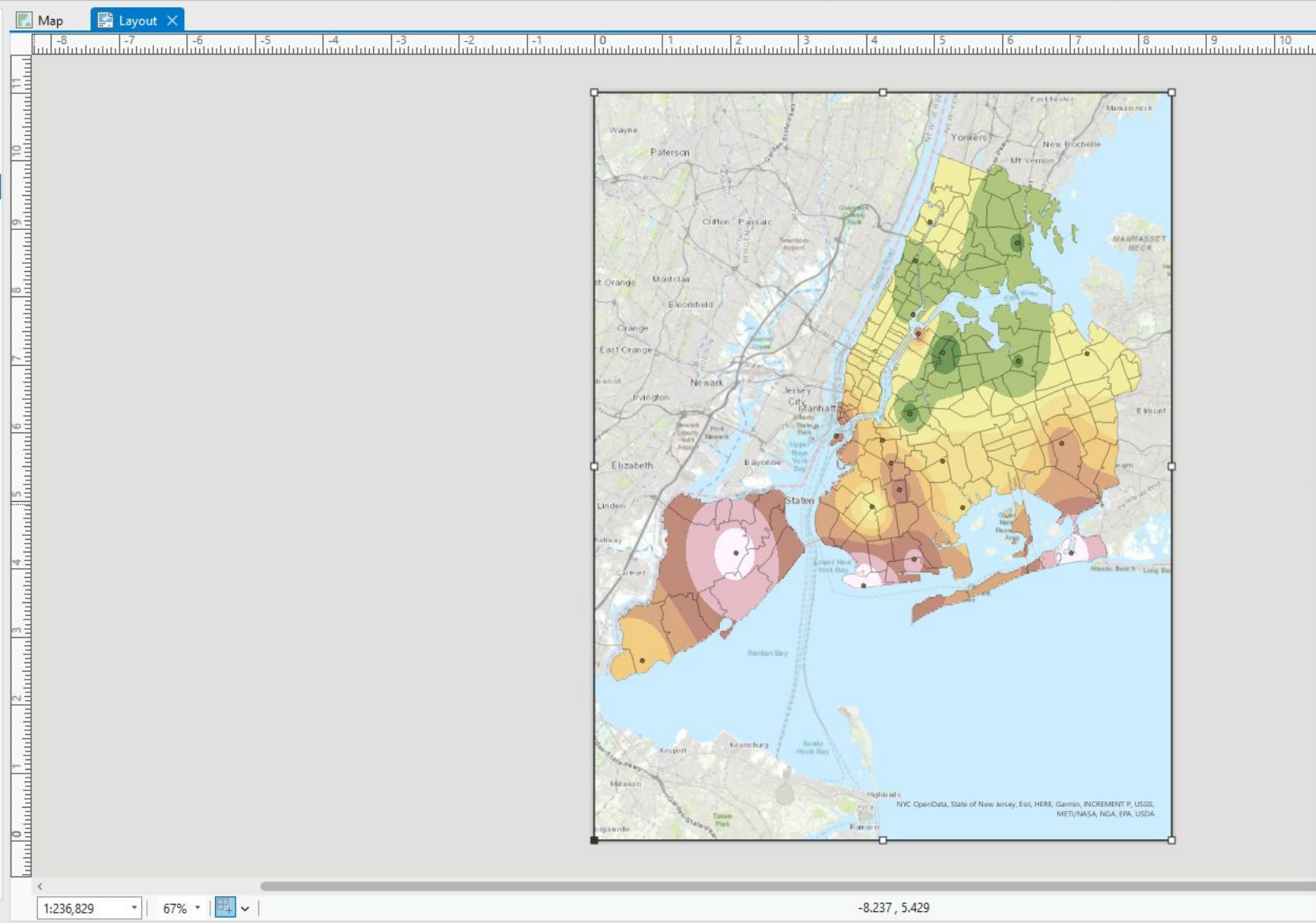
Search

Drawing Order

- Layout
 - Map Frame
 - Map
 - Rainfall_XYTableToPoint
 - ZIP_CODE_040114
 - Idw_Rainfall3

| VALUE | Color |
|---------------|--------------|
| 2.904 - 3.215 | Dark Green |
| 3.216 - 3.448 | Light Green |
| 3.449 - 3.623 | Yellow |
| 3.624 - 3.753 | Light Orange |
| 3.754 - 3.85 | Orange |
| 3.851 - 3.98 | Dark Orange |
| 3.981 - 4.154 | Brown |
| 4.155 - 4.387 | Dark Brown |
| 4.388 - 4.7 | Pink |
 - Topographic
 - Standalone Tables
 - Rainfall\$

1:236,829 67%



Symbology

Select a layer in the Contents pane.

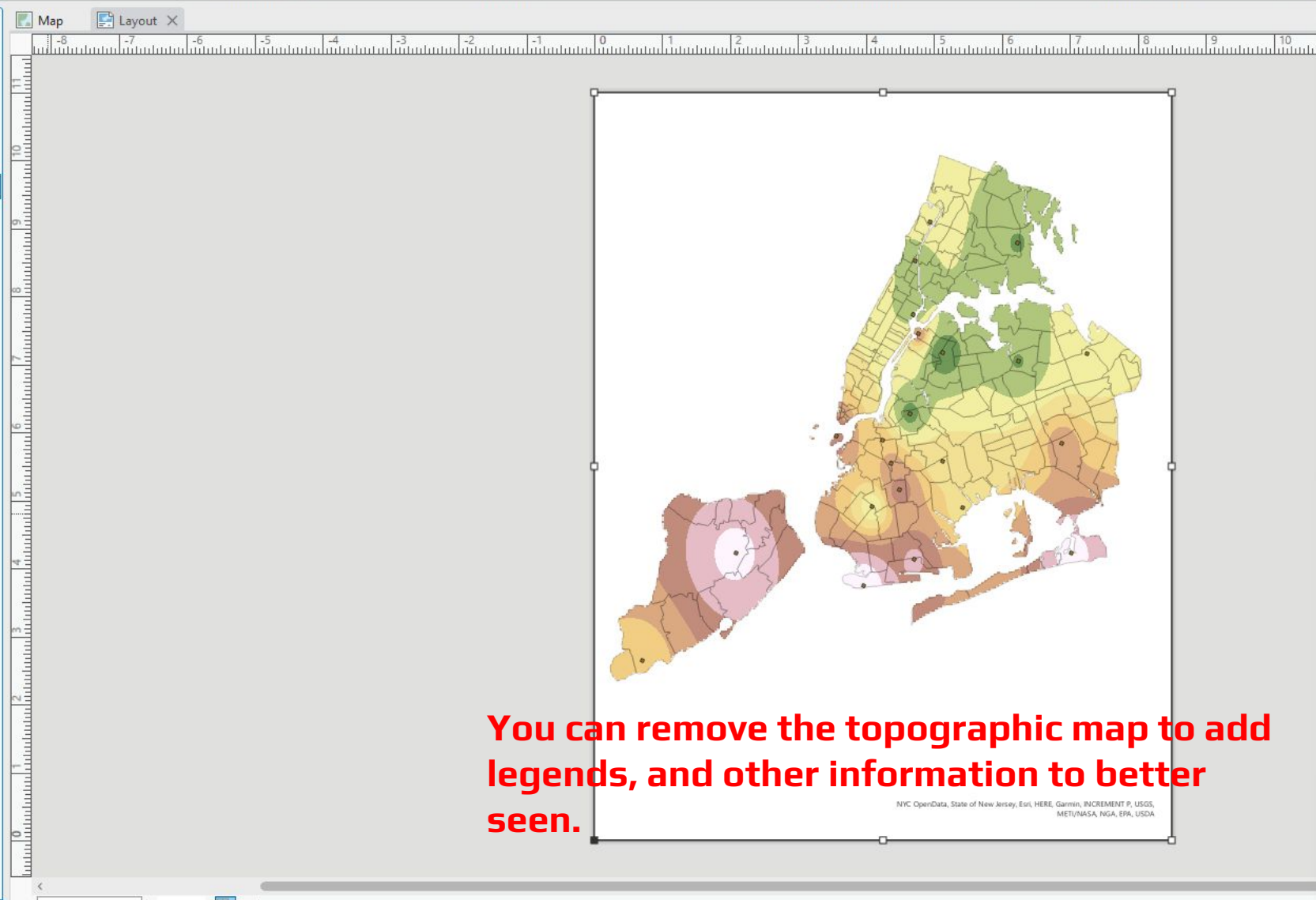
Symbology Geoprocessing

Contents

Search

Drawing Order

- Layout
 - Map Frame
 - Map
 - Rainfall_XYTableToPoint
 - ZIP_CODE_040114
 - Idw_Rainfall3
 - VALUE
 - 2.904 - 3.215
 - 3.216 - 3.448
 - 3.449 - 3.623
 - 3.624 - 3.753
 - 3.754 - 3.85
 - 3.851 - 3.98
 - 3.981 - 4.154
 - 4.155 - 4.387
 - 4.388 - 4.7
 - Topographic
 - Standalone Tables
 - Rainfall\$



Symbology

Select a layer in the Contents pane.

1:236,829 67% -8,036, 4,809

Symbology Geoprocessing

Now you can follow same process you did in assignment 1 to add Title, North Arrow, Scale Bar, Your Name and Export the map as pdf to upload at Google Folder that has been shared with you.