

ASSESSMENT OF LAKE WATER QUALITY AND QUANTITY USING SATELLITE REMOTE SENSING

Grad Student:

Stephany Paredes Mesa

sparedeo1@citymail.cuny.edu

Advisor:

Tarendra Lakhankar

Why is It Important ?

Lakes provide various socioeconomic benefits:

- Fisheries.
- Recreations.
- Hydroelectricity.
- Drinking and Irrigation water supply.

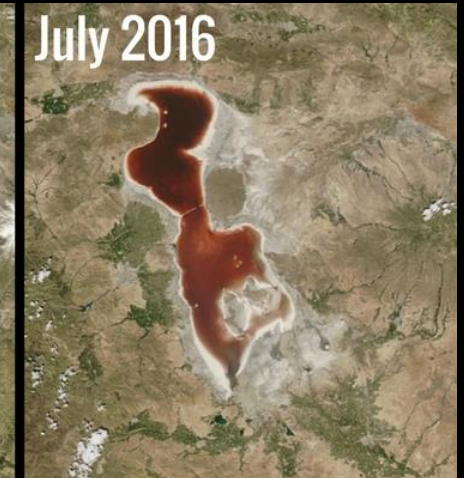
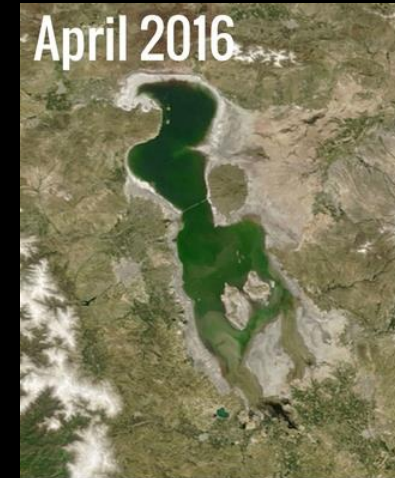
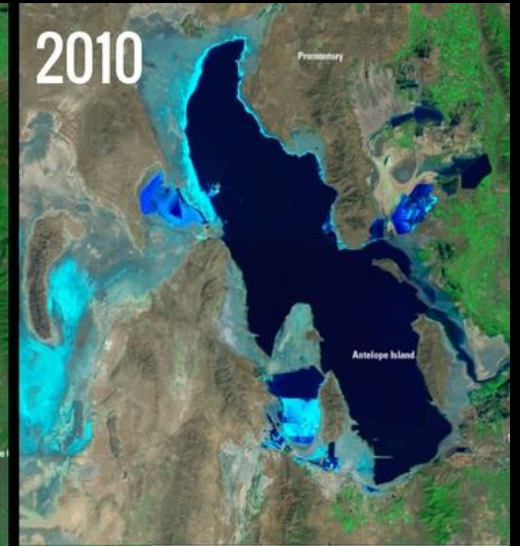
Environmental benefits:

- Ease the Impacts of Floods and Droughts.
- Replenish groundwater.
- Preserve biodiversity and habitat of the area.



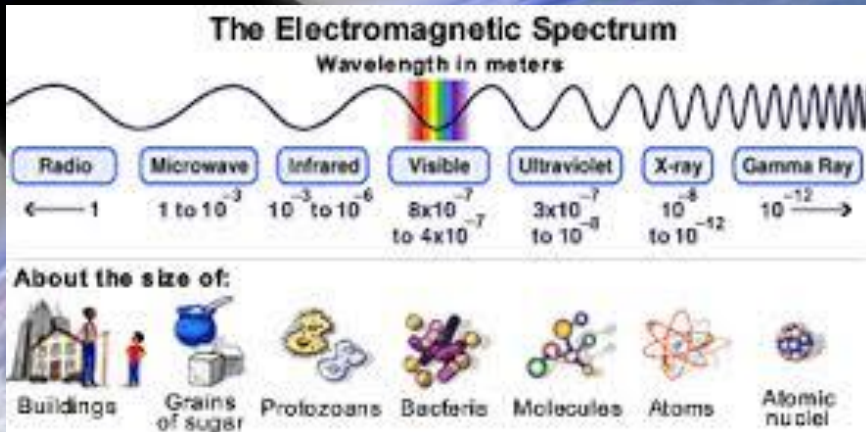
What Would We Be Looking For?

- Surface area change.
- Turbidity/Sedimentation.
- Algal blooms (eutrophication).



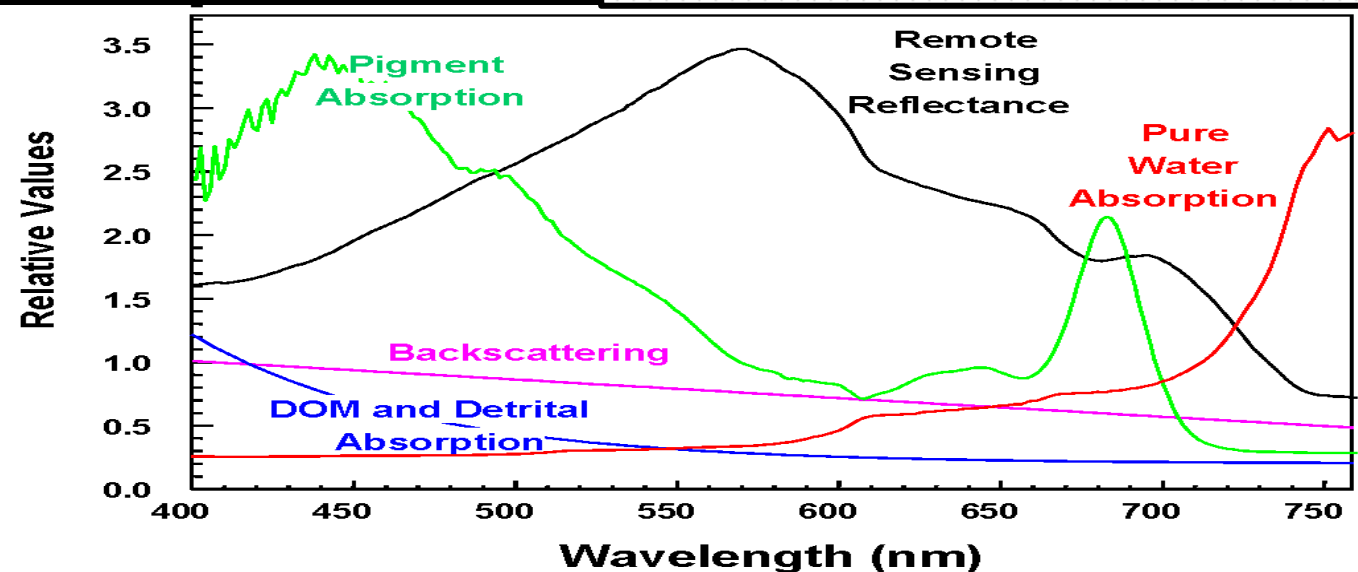
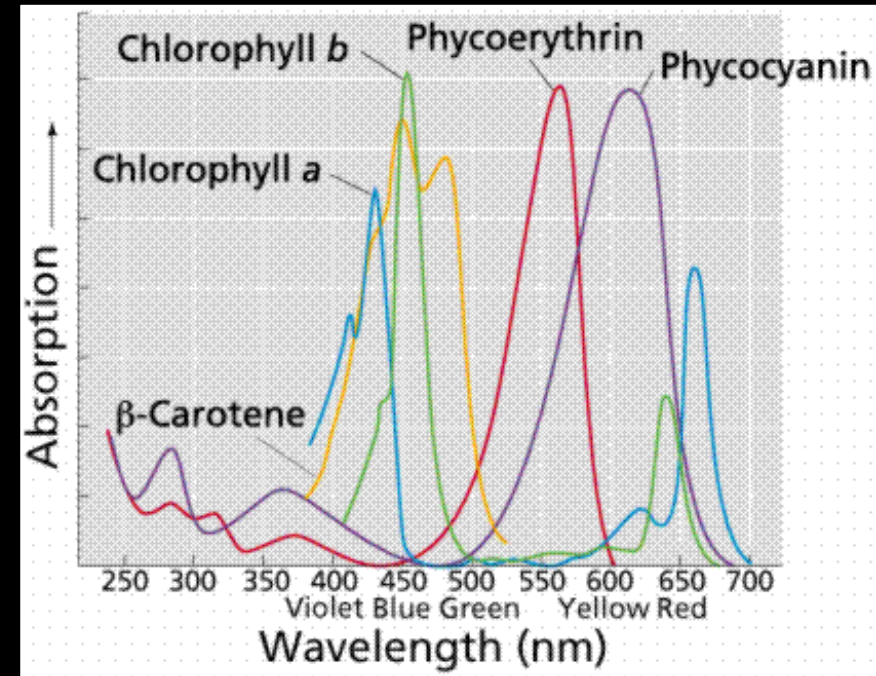
How Would We Be Doing So?

- 10 lakes would be picked around the globe.
- Landsat, MODIS, and SAR and any in situ data.
- Period of around 20 years.



How Would We Be Doing So?

- Using GIS and MATLAB.
- Satellite imagery to estimate the water surface area difference.
- The water quality analysis will be based on water color and the Inherent Optical Properties (IOP).





ANY QUESTION ?